

Beaulieu

R16
electric

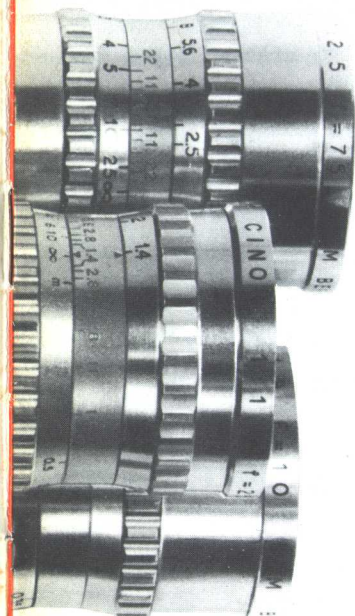


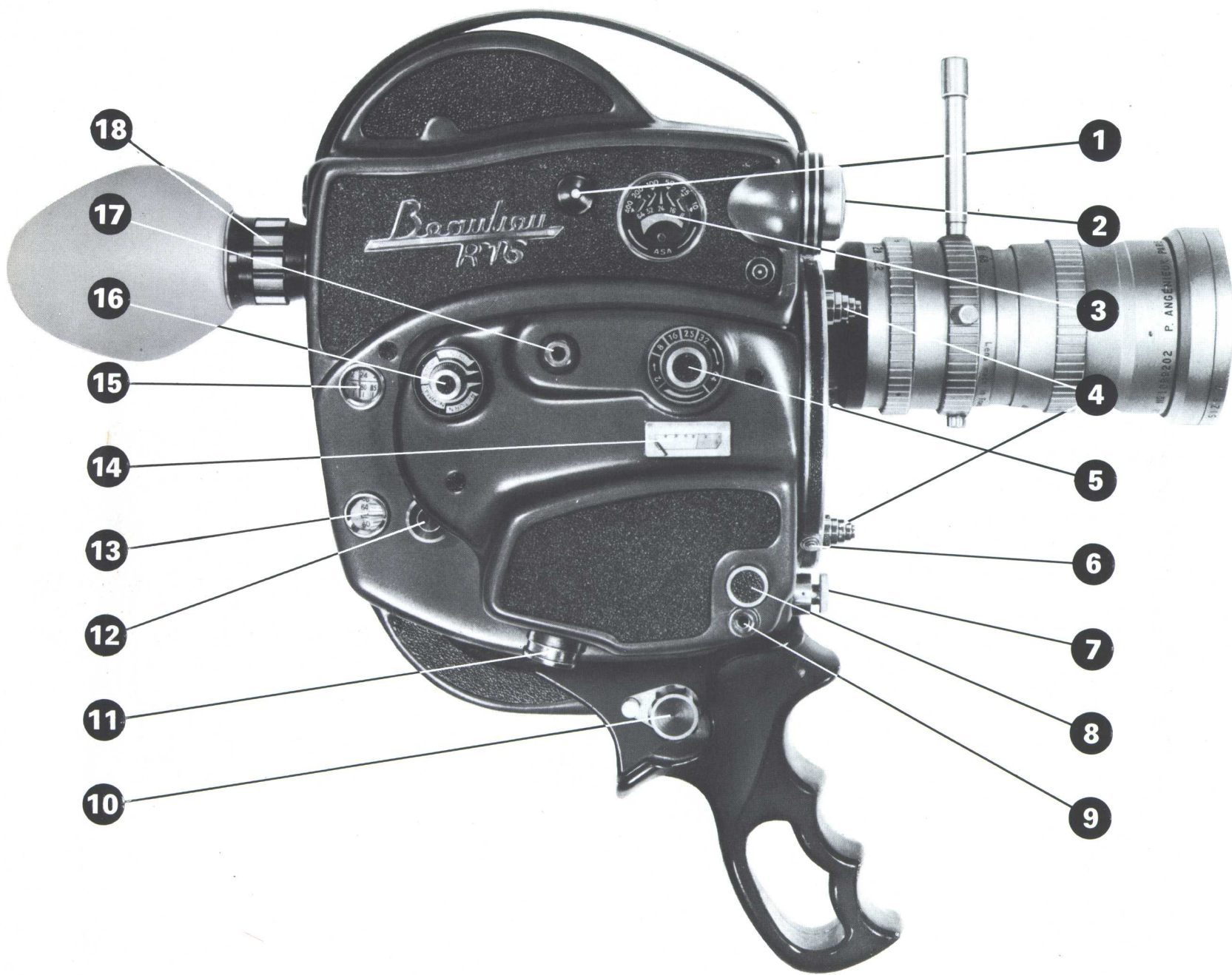
R 16 electric

**THE BEAULIEU R 16 ELECTRIC —
A SOPHISTICATED “ROVING” CAMERA
THAT HANDLES LIKE ANY AMATEUR MODEL**

Recent advances in miniaturization techniques, plus the use of new materials have made it possible for Beaulieu to produce what was, until now, deemed unfeasible : a lightweight 16 mm camera of compact size (2 kg - the world's lightest) embodying every professional facility. A boon to all 16 mm professionals (TV reporters, newsreel journalists, scientists, industrial reporters, roving cameramen) the R 16 electric features “handability” to a degree that sets a new style in “live” reporting. Equal to all circumstances - place, time or action - the Beaulieu responds with unfailing dependability and clockwork precision - the prime qualities demanded by professionals. If you are addicted to pin-sharp, vividly alive pictures, the combination of 16 mm high definition and outstanding possibilities offered by the Beaulieu R 16 Electric will measure up to your requirements. Now read on...

Beaulieu





- 1 checking of dry cells
- 2 battery case
- 3 ASA setting
- 4 turret actuating knobs
- 5 speed setting control
- 6 turret-locking pawl
- 7 trip press-button
- 8 sound sync socket
- 9 single frame release socket
- 10 grip handle fixing socket
- 11 battery supply socket
- 12 frame counter zero reset
- 13 frame counter
- 14 tachometer indicator
- 15 footage counter
- 16 master switch
- 17 remote trip
- 18 eyepiece adjustment

R16

electric

Beaulieu
ultra-luminous
reflexviewing
on
ground glass
provides
3-dimensional
image

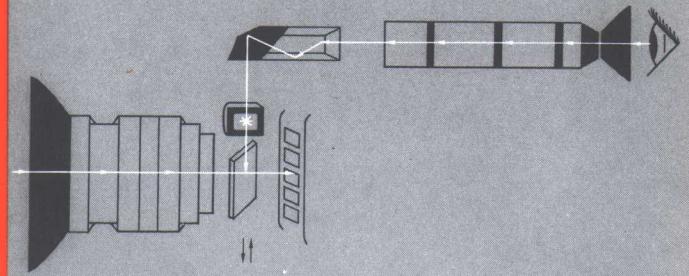
16 mm professionals were the first - and keenest - supporters of the Beaulieu Reflexviewing system, because the logic of its principle is inescapable : 100% of the gated light beamed, alternatively, onto the film and to a ground glass, via a mirror placed on the slide shutter (photo A). This provides :

— **Ultra-luminous comfortable viewing** - Irrespective of diaphragm aperture, luminosity is exceptional. This enhances accuracy, facilitates aperture adjustment and evaluation of available field depth. The high luminosity of the viewing system and the ease of handling of the Beaulieu R 16 are universally recognized by leading Endoscopy Centres in France (photo B) and in other countries.

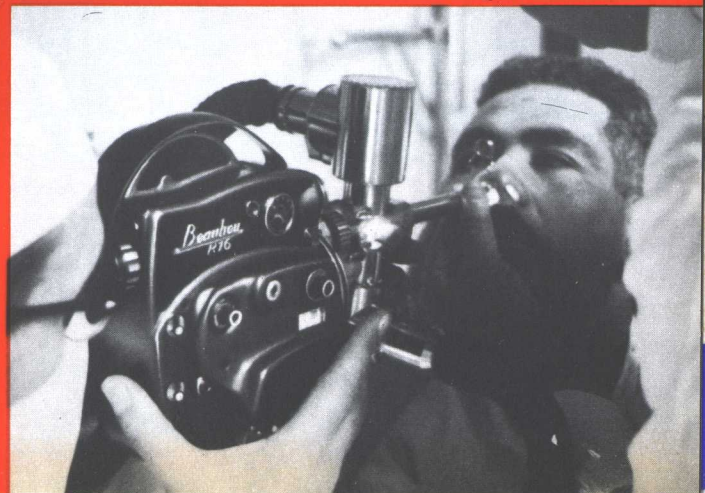
— **High-precision Focusing and framing** - The system removes every trace of ambiguity in focusing. There is no optical distortion. Spurious reflections are excluded. The divided-grain ground lens "sets" the image and brings the selected subject into sharp focus against a soft background. Focusing can be switched from one subject to another, while filming proceeds. Scenes can be successively and gradually ranged into focus (Photo C).

The R 16 faithfully records what you see in the viewfinder, whatever the type of lens used for filming.

Study this diagram :
it shows why the Beaulieu reflexviewing
system is better



With ground-glass viewing,
you can accurately "control"
the image in every detail
- in depth and in focus

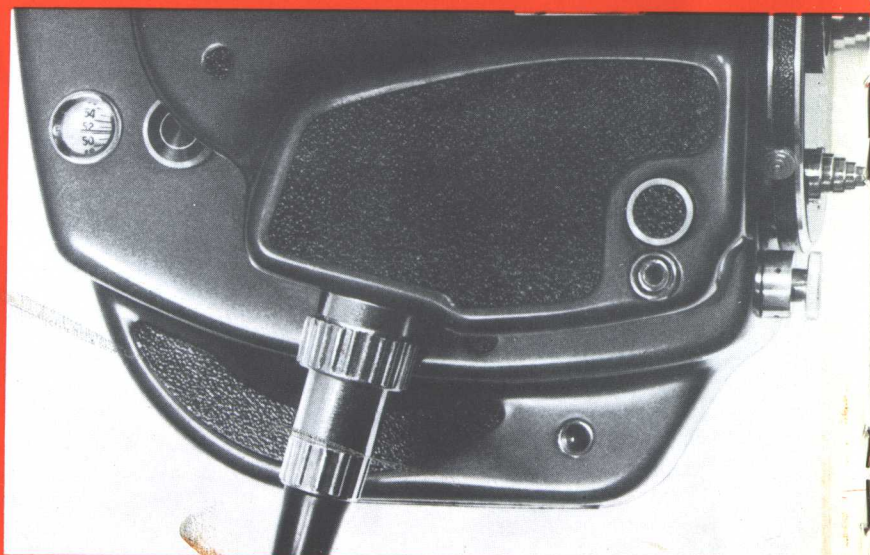
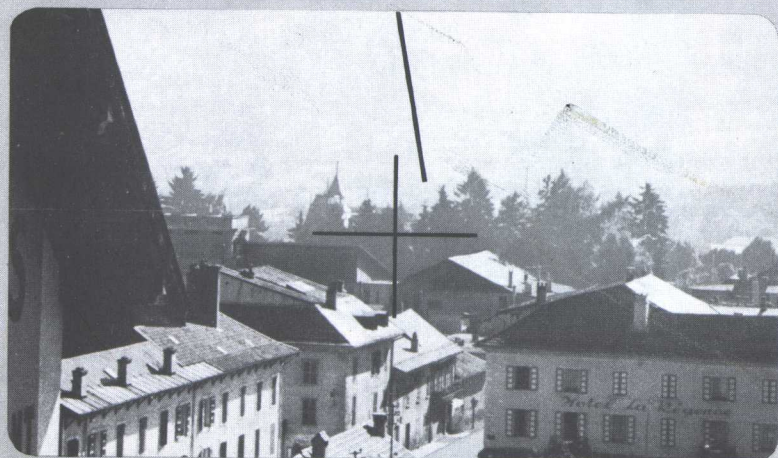


Beaulieu

Ultra-luminous Beaulieu
Reflexviewing
is an invaluable aid to endoscopy

One of the most valued features of the BEAULIEU camera is its Gossen high-precision reflex photocell with indicator pointer built into the viewfinder. This means that photocell readings are valid for all types of lenses (400 mm tele-lens, 10 mm wide-angle or 24 x 36 mm photo lenses!), with equal sensitivity and accuracy.

Another prime feature, is the regulated electric motor, with speed held constant by a transistorized electronic regulator. The system guarantees superior stability of drive at all speed settings, under all filming conditions.



Reflex photocell
(mounted
immediately
behind the lens)
provides indications
of high accuracy,
irrespective
of lens type

Exact
Indexing
of filming
speeds
and absolute
steadiness
of film
drive

The tachometer
of the
BEAULIEU
R 16
ELECTRIC
enables
accurate
selection
within a wide
range
of speeds:
2 to 64 fps.
Precise speed
selection
and steady
film drive
permit
perfect
sound-with-film
synchronization.



Beaulieu

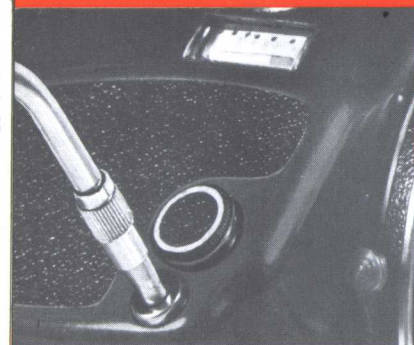


full control facilities

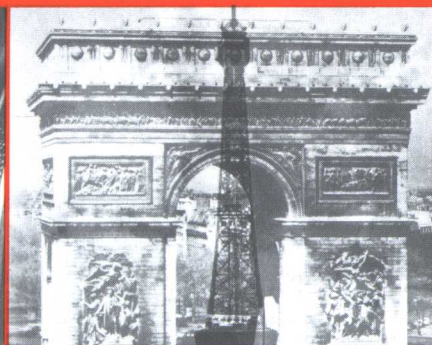
Equipped with external battery power, the R 16 retains maximum handling convenience. The camera accepts equally two types of Beaulieu 7.2 V batteries :

- **Pocket batteries** (supplying enough power for 6 films at 16 fps) can be carried in pocket, hooked on buttonhole or attached to camera grip.
- **Professional batteries** (power for 30 to 50 films) packed in leather case - carried with shoulder strap.
- The batteries are cadmium-nickel, rechargeable on 110/220 V AC-line supplies (50/60 cycles).

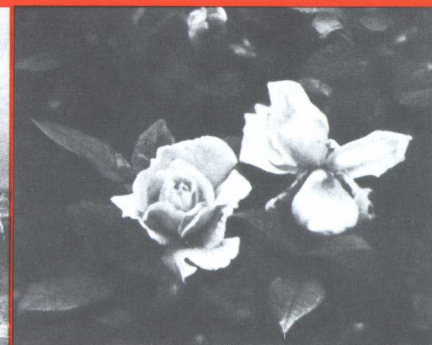
The R 16 can also be powered from car batteries. Your Beaulieu R 16 is always ready to perform - anywhere, under any conditions.



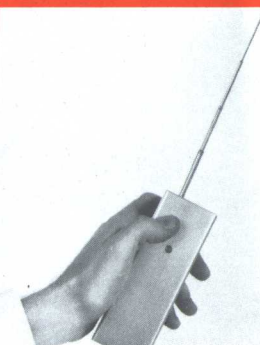
Normal trigger
by trip-button
lockable
for continuous filming.
Button socket
accepts flexible
trip attachment.



Full reverse drive -
by motor.
Permits continuous
reverse motion
effects,
fade-dissolves, etc.

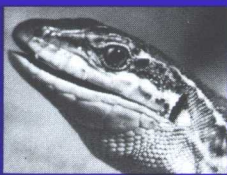


Single-Frame
for recording
items with very
slow rates
of change (flowers)
- or for special effects
with live subjects
(street scenes, animals...)
- also enables animated
cartoons, etc.



Remote-control
- the Beaulieu R 16
can be remote-controlled
by wire or radio link,
by photocells,
by timing devices, etc.
An advanced facility
which is invaluable
when filming
in hazardous conditions
(wild animals,
scientific experiments)
- or for candid shots
(children, animals, etc.).

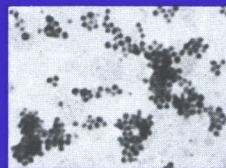
"macro" "micro"

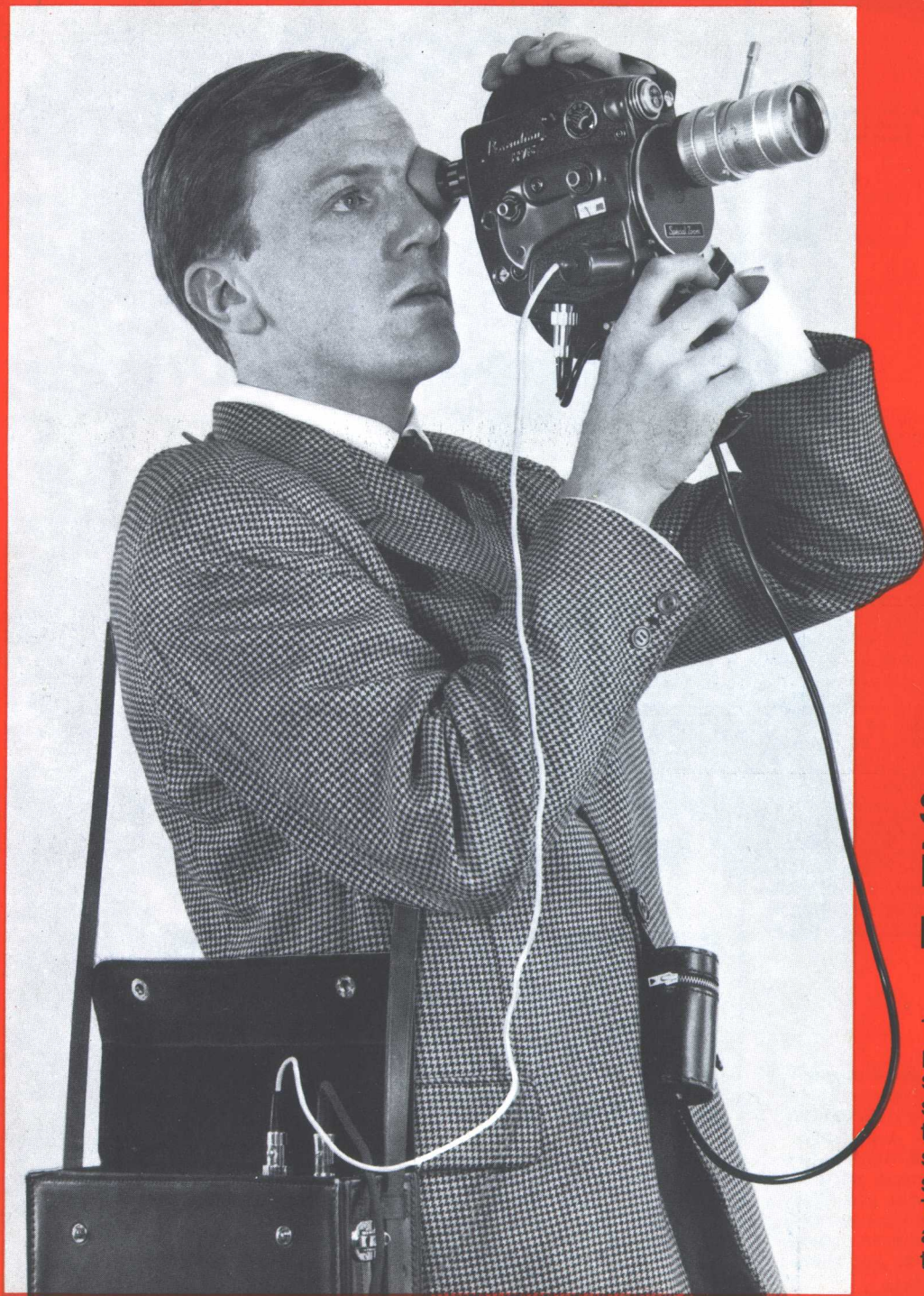


The Beaulieu Electric accepts adaptor rings and extension tubes, because its reflexviewing system enables accurate focusing, framing and precise evaluation of field depth. For macrocinematography, Beaulieu have developed a set of five extension tubes, ranging in length from 5 mm to 50 mm, and readily adaptable to both camera and lens threads by means of special adaptor rings.



The same set of extension tubes is utilisable for microcinematography, tube size being determined by the desired degree of magnification. They screw directly into the camera (in place of the lens) and are adapted to the microscope ocular by means of a baffle-type adaptor ring. Focusing is performed directly on the ground-glass of the reflexviewing system.





simultaneous image-sound recording

The precisely regulated motor of the R 16 permits "live" sound takes. The sound socket (1 rev/frame) is designed for pilot-sync input. The sync attachment is connected to a tape-recorder - equipped with a sync head - which records sound in precise step with the image. The film and the tape recording are sent to a laboratory specialized in sound-track transfer.

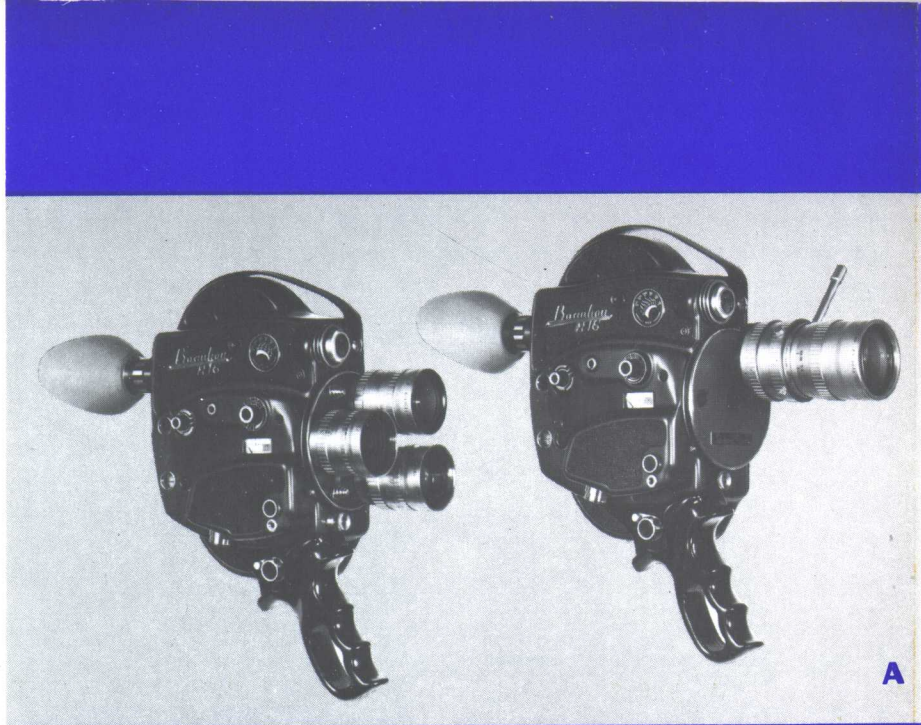
the R 16 accepts all cine lenses ... and 24 x 36 photo lenses, as well

All commercial cine lenses with C-mount can be used on the R 16. Furthermore, cleverly designed Beaulieu adaptor rings extend this facility to most 24 x 36 photo lenses (photo B). See your Beaulieu agent for more details. This means a twofold increase by comparison with the 16 mm format and, consequently, a photo lens used on the R 16 will rate a twofold increase in magnifying power. Another benefit derived from the use of photo lenses is improved image sharpness and definition, since only the centre portion of the image is used - that is the area where image definition is optimum.

The Beaulieu Reflexviewing system guarantees perfect framing and focusing, irrespective of lens type.

* *The Beaulieu R 16 is available in two different versions: (photo A)*

- fixed turret, with single socket mounting either a fixed focal-length lens or a variable focal-length lens with C-mount (R 16 special Zoom).
- Rotary turret with three sockets, accepting any 16 mm lens with C-mount.
or a Zoom lens - or a wide-angle lens (e.g., 10 mm).



A

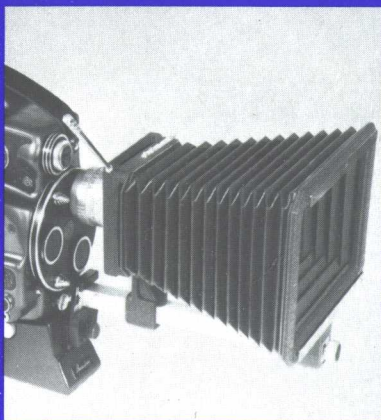


B

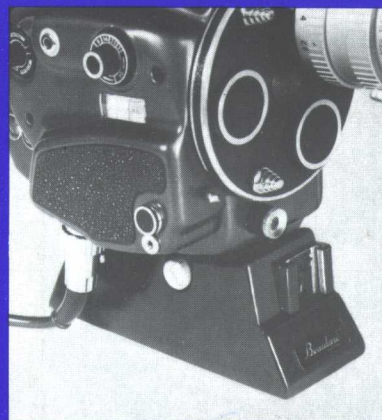
leather "roving camera"



Leather
"roving camera" case -
with full internal lining -
accommodates
the R 16 Electric
complete
with all routine
accessories
(pistol grip,
film loads,
filters, etc.)



When fitted
with the Beaulieu
fixture plate,
the R 16
can be equipped
with the attachment required
for trick filming :
title screens,
masks, iris effects,
transparency filming,
etc.



The fixture
plate ensures
perfect steadiness
on table or stand,
even when the R 16
is equipped
with large-size
tele-lenses.



The Beaulieu charger
is the only one
suitable for charging
the "pocket"
and "professional"
batteries used with the
Beaulieu R 16 Electric.
Compact-sized,
operates on 110/220 V.
supplies.

Beaulieu **R16 electric**